

# CS650DBFL

Low Profile Dipole/Bipole, In-Ceiling, Coaxial,  
Infinite Baffle Loudspeaker, with FastLoc Grille

The easy to install CS series Dipole/Bipole FastLoc™ speakers are a full range ceiling loudspeaker that incorporates high tech woofer materials with a butyl rubber surround and two fixed angle state-of-the-art Ferrofluid cooled dome tweeters.

This revolutionary combination provides superior and more natural wider big sound close to what you would experience in a movie theater that has multiple surround speakers. The dual purpose speaker is the perfect choice for both Side Surround and Surround Back applications in one package.

A simple switch on the Tweeter Bridge allows you to choose either Dipole for Side Surround or Bipole for the Surround Back function. In the Dipole function the tweeters are purposely out of phase to create a Null around the listening area that detunes the localization for ambience. When set to Bipole the tweeters are in phase to enhance localization for Dolby Digital EX, DTS-ES and THX EX. The Infinite Baffle design makes it the ideal choice for typical applications in open beam attic or enclosed ceilings.

For efficiency and consistency the CS65DBFL series are timbre matched to the CS, FIT, FIT FastLoc and WS series of speakers.

It also features the revolutionary FastLoc™ zero edge quick connect grille. Architects and designers have resisted the size of the traditional bezel. The FastLoc™ feature, found only at Current Audio, exhibits the smallest exposed bezel that virtually disappears into the ceiling. But the major feature is the Patent Pending design that allows for rapid install that conforms to uneven surfaces. This prevents the grille from falling off even in earthquakes and does not collect ferric dust on magnets.

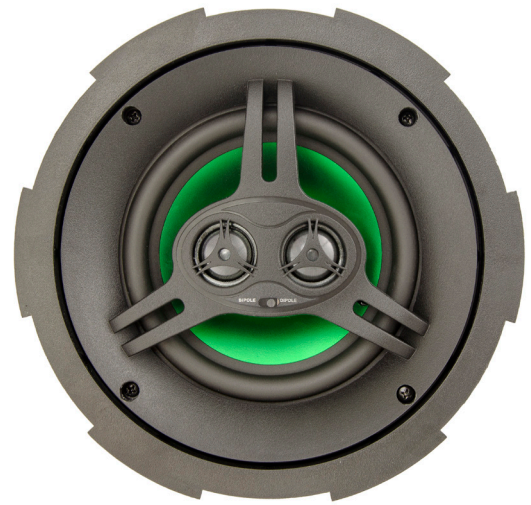
The FastLoc™ speaker grille color is white, and is a close match to Frazee White Shadow 181. It can be painted to match any décor. The speaker enclosure is a durable UV-resistant material that allows for both indoor and outdoor installations. The speaker is weather-resistant.

Unlike other grilles that use magnets to hold them on they must be made of steel that will rust. The perforated powder-coated aluminum alloy grille is long-lasting, corrosion resistant and rust-free.

Four built-in expanding transverse dog leg clamps permit installation with or without pre-wire construction brackets in drywall or material with thickness of 7/32" to 1 3/16".

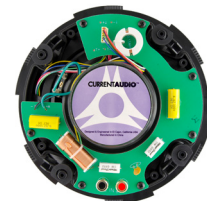
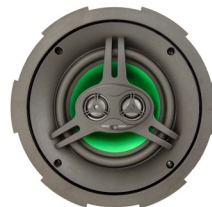
Electrical connection, up to 12 gauge wire, is made by two gold plated constant tension spring-loaded terminals.

With our limited 5 Year warranty you are assured years of superior trouble free operation.



## SPECIFICATIONS

Driver	6.5" MetaPlex™ Composite Cone w/Butyl Rubber Surround
Tweeter	Two 1" (25mm), Diffractionless Dome Silk Ferrofluid Cooled Dome
Frequency Response	42Hz - 20kHz
Power Handling	5 - 100 Watts
SPL @ 1 Watt/1 meter	90dB
Impedance 8 ohm nominal	Adjustable Tweeters, Selectable Dipole or Bipole
Diameter x Depth	9 3/8" (237mm) x 3 3/4" (95mm)
Retrofit Cutout Diameter	8 3/8" (213mm)
Grille Diameter	9 3/4" (247mm)
Standard Pair Pack Dimensions (weight)	14 3/4 x 14 3/4 x 12 3/4 (14 lbs)
Master Pack Dimensions 2 pair (weight)	30 x 15 5/16 x 13 1/2 (30 lbs)



Part Number	92093
Manual URL	<a href="http://www.currentaudio.com">www.currentaudio.com</a>
Accessories	New Construction Bracket NC6CB Part #92026 Volume Control ZL75R Part# 92034 SpeKap Part # 92069



[www.currentaudio.com](http://www.currentaudio.com)

©2017 Current Audio • 1890 Cordell Court, Suite 105 El Cajon, CA 92020 • Sales 866-927-7181

All product specifications are subject to change without notice.

Rev. SS-CS650DBFL 10/11