

# FIT650FL

## 8" 2-Way, In-Ceiling, Coaxial, Infinite Baffle Loudspeaker

The easy to install FIT650FL is a full-range ceiling loudspeaker with Focused Image Technology™. It incorporates the MetaPlex™ woofer with a butyl rubber surround and the diffraction-less silk dome pivoting Ferrofluid cooled tweeter. This Patent Pending pivoting tweeter allows for deeper penetration into the room and a concentrated sound to the sweet spot. This revolutionary combination provides superior and more natural sound for both foreground and background applications.

The FastLoc grille patent no. 8,422,722, is a feature found only at Current Audio. Our design has allowed for the smallest exposed plastic bezel in the industry, truly making it disappear into the mounting surface. The FastLoc grille's unique patent pending mechanism allows for a quick installation and removal of the grille while securely fastening it in place to all types of mounting surfaces. Due to the unique design the grille will conform to uneven surfaces including popcorn, heavy textured and uneven ceilings. While our competitors have chosen to utilize magnets in their designs thus requiring the use of a steel grille that will rust our design allows us to use corrosion and rust resistant aluminum.

The FIT series speakers additionally incorporate the unique Patent Pending Three Dimensional Positioning (3-DP) woofer. This design allows the user to separately adjust the angle, tilt and rotation of the woofer so you can direct the sound where you want it, not where you install it.

The Positive Position Lock system (PPL) uses two screws on either side of the woofer that pull the back plane tight and locks the position in place.

The Infinite Baffle design makes it the ideal choice for typical applications in open beam attic or enclosed ceilings.

For efficiency and consistency the FIT650FL is timbre matched to the CS650FL and WS650FL series of speakers.

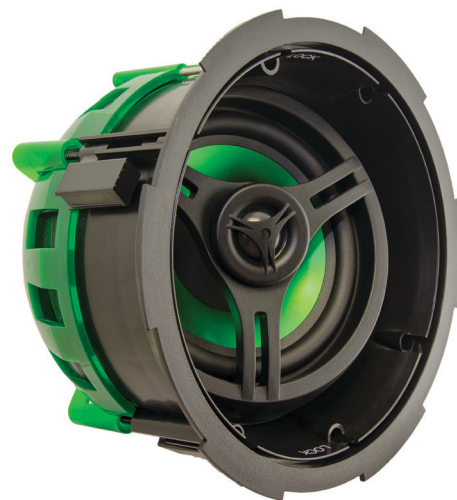
The speaker color is white, and is a close match to Frazee White Shadow 181. It can be painted to match any décor. The speaker enclosure is a durable UV resistant material that allows for both indoor and outdoor installations. The speaker is weather-resistant.

The perforated powder-coated aluminum alloy grille is long lasting, corrosion resistant and rust-free.

Four built-in expanding transverse dogleg clamps permit installation with or without pre-wire construction brackets in drywall or material with thickness of 5/16" to 1 5/16".

Electrical connection, up to 12 gauge wire, is made by gold plated constant tension spring-loaded terminals.

With our limited 5 year warranty you are assured years of superior trouble free operation.



### SPECIFICATIONS

Driver	6.5" MetaPlex™ Composite Cone w/Butyl Rubber Surround
Driver Pivoting Angle	25° per side
Tweeter	Patent Pending Pivoting, Defraction-less 1" (25mm) Silk Ferrofluid Cooled Dome
Tweeter Pivoting Angle	18° per side
Crossover	Gold Press Terminals
Grille specification	Perforated Aluminum with Scrim Cloth
Frequency Response	42Hz - 20kHz
Impedance (nominal)	8 Ohms. Fixed Crossovers
Power Handling	5 - 100 Watts
SPL	90 dB 1W/1m
Diameter x Depth	10 1/4" (260mm) x 5 5/8" (144mm)
Retrofit Cutout Diameter	8 3/8" (213mm)
Grille Diameter	9 3/4" (247mm)
Standard Pack Dimensions (weight)	12 1/2 x 9 1/8 x 12 1/2 (6 lbs)

Part Number	92062
Manual URL	<a href="http://www.currentaudio.com">www.currentaudio.com</a>
Accessories	TB6 Tile Support Bridge Part# 92083 R70VT Transformer, 8ohm, 70V, Part# 92070 Volume Control ZL75R Part# 92034 SpeKap Part # 92069

