

WSLCRFL Series In-Wall Speaker User's Installation Guide

Low Profile, In-Wall, Coaxial, Infinite Baffle Loudspeaker with Easy Install FastLoc™ Grille

Double 6.5" Thumping Trumping sound that fits both vertically and horizontally between standard 2" X 4" studs. They include revolutionary Zero Edge Grilles that allow the grille to be inserted and locked in either vertical or horizontal up/down or left /right direction. The easy to install WSLCRFL series speakers are a two way In-Wall loudspeaker that incorporates high tech woofer materials with a butyl rubber surround, specially formulated TPV Santoprene™ covered baffle membrane and a state-of the-art Diffractionless pivoting dome Ferrofluid cooled tweeter. The TPV Santoprene™ covered baffle membrane dampens energy emitted from the drivers and accurately couples the sound to the entire assembly wall surface. Also, the TPV Santoprene™ covered baffle membrane reduces any high frequency bounce emitted from the tweeter. The pivoting tweeter allows for deeper penetration into the room and focuses robust high frequency energy sound to the sweet spot.

This revolutionary combination provides superior and more natural sound for both foreground and background applications. This design is a great choice for 3-D Audio, stereo and surround sound applications.

For efficiency and consistency the WSLCR series speakers are timbre matched to the CSLCR, WS and CS series of speakers. The CSDBFL series is a great compliment for Surround systems. In addition, some of the WSLCR speakers incorporate a 3 position equalization switch, one for bass and one for treble, to fine tune the acoustics and adjust for various room surfaces.

The speaker grille color is white, and is a close match to Frazee White Shadow 181. It can be effortlessly painted to match any décor. The speaker enclosure is a durable UV-resistant material that allows for both indoor and outdoor installations. Unlike other grilles that use magnets to hold them on, they must be made of steel that will rust and can fall off. The patent pending perforated zero edge FastLoc grille is a powder-coated aluminum alloy grille is long-lasting, corrosion resistant and rust-free. It conforms to any surface with no shadows or gaps and does not cause sunbursts from ferric dust attraction on magnets like other designs. The Grille is only .255" (6.48mm) in height.

Six built-in expanding transverse dog leg clamps permit installation with or without pre-wire construction brackets in drywall or material with thickness of 7/32" to 1 3/16". Electrical connection, up to 12 gauge wire, is made by two gold plated constant tension spring-loaded terminals.

With our limited 5 year warranty you are assured years of superior trouble free operation



WSLCR650FL

SPECIFICATIONS for WSLCR65FL Series	WSLCR650FL	WSLCR654FL
Driver with Butyl Rubber Surround	MetaPlex Composite	Woven Carbon Fiber
Tweeter, 1"(25mm), Pivoting Dome	Silk Ferrofluid Cooled	Ceramic Coated Aluminum Ferrofluid Cooled
Frequency Response	42Hz-20kHz	35Hz-21kHz
Power handling	5-100 Watts	5-150Watts
SPL @ 1 Watt/1 meter	90.5 dB	91.5 dB
Impedance 8 ohm Nominal	Fixed Crossovers	3 Position Crossovers
Length x Width x Depth	17"(431.8mm)x9.62"(244.4mm)x3.88"(98.55mm)	17"(431.8mm)x9.62"(244.4mm)x3.88"(98.55mm)
Retro-fit Cutout Length x Width	14.2"(360.7mm)x7.6"(193mm)	14.2"(360.7mm)x7.6"(193mm)

Part Number	92091 WSLCR650FL; 92092 WSLCR654FL;
Manual URL	www.currentaudio.com
Accessories	92096 NC6LCRWB; New Construction Bracket, SpeKap



WSLCR654FL



WSLCR650FL



WSLCRFL Series In-Wall Speaker User's Installation Guide

Packaging and Enclosed Parts

Please inspect your pack for damaged or missing parts. Notify your supplier if any discrepancies occur. There are four (4) parts in the package: Two (2) main speaker housings and two (2) FastLoc™ grilles.

Only simple hand tools are required for assembly and installation.

Required tools: #2 Phillips screwdriver only, if you have new construction brackets previously installed.

Drywall Hand saw if no New Construction Brackets were installed. A saber saw may be required if you are cutting into plywood.

Painting the Speaker Grille

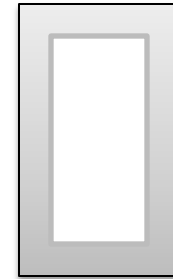
If grille requires painting, carefully remove the white scrim cloth on the inside of the Grille and save for reinstallation. This cloth is provided for aesthetic purpose only. Either spray paint the grille or use a stiff stipple paint brush. Do Not clog the perforated holes as this will impede the acoustics of the speaker. Since it has the zero edge grille there is no large bezel to paint. You can remove the grilles and paint on the ground.

1 Cut Hole for FastLoc™ Speaker

Using the supplied Trace Template, place the cutout template against the wall about 50" from the floor for the Right and Left Speaker and above or below TV. Then trace along the inside cutout. It is suggested to cut a small triangular pilot hole to verify no obstructions, such as pipes or beams, that could hinder the install. Save the drywall plug for repair if required.

Carefully cut out the wall material along the marking. A hand drywall saw is perfect for this step. Hold a box or trash can under your cutting to catch the debris. Also, if you place a piece of masking tape half way on the line and bend it at a 90 degree it will further catch the drywall dust and prevent major clean up.

NOTE: A stud finder may be helpful to locate the cross beams. You want to layout the hole to the side of any beams.



Trace Template

2 Connect Wire to FastLoc™ Crossover

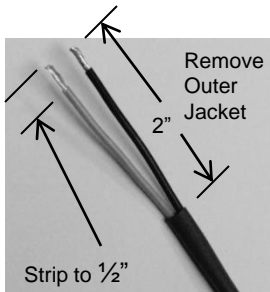
After you have cut your desired hole from the template, locate the speaker wire for that speaker. Pull enough wire slack down to attach the 2 conductor wire to the gold plated constant tension spring-loaded terminals.

Remove about 2" of the outer jacket then strip about 1/2" insulation from each wire and slightly twist the strands to ensure all strands can be inserted into the hole. Refer to next picture for location of the gold plated constant tension spring-loaded terminals on the crossover circuit board of the speaker.

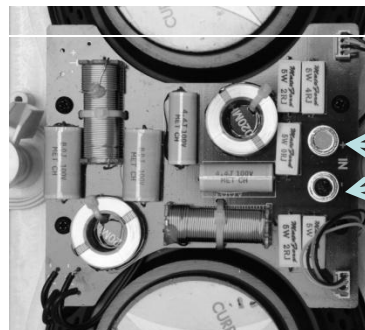
Push down on the RED (+) colored Terminal and insert the Red or copper colored conductor all the way up to the insulation into the hole at the bottom of the terminal. Now release your finger from the terminal. Next do the same to the Black or silver colored conductor and insert into the BLACK (-) colored Terminal. Make sure there are NO whiskers from the strands that could cause a short. The other end of these wires will be connected to your amplifier or volume control.

Note: Sometimes your wire color may be White (+) and Green (-).

You now have a connection with the proper tension for continued operation that will not wiggle out or cause poor connection.



Strip Gauge



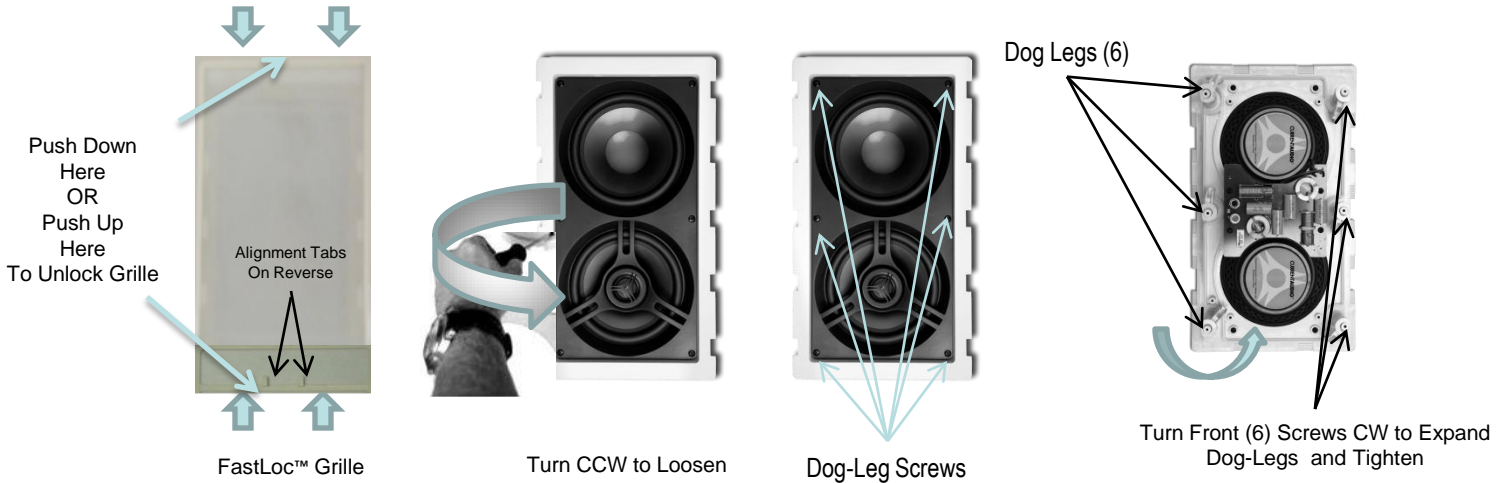
RED

BLACK

Gold Plated
Constant Tension
Spring-loaded
Terminals

3 Prepare FastLoc™ Speaker for Install

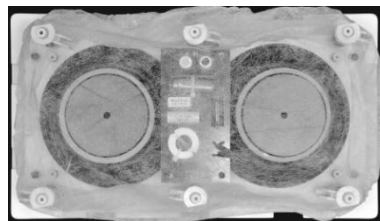
Remove the grille by slightly applying pressure either to the top or bottom on the short side of the grille then slide the grille up or down about ¼". When the grille tabs are aligned with the speaker notches the FastLoc™ grille can be removed. Loosen the six (6) Dog-Leg screws a ½ turn counterclockwise with a #2 Phillips screwdriver.



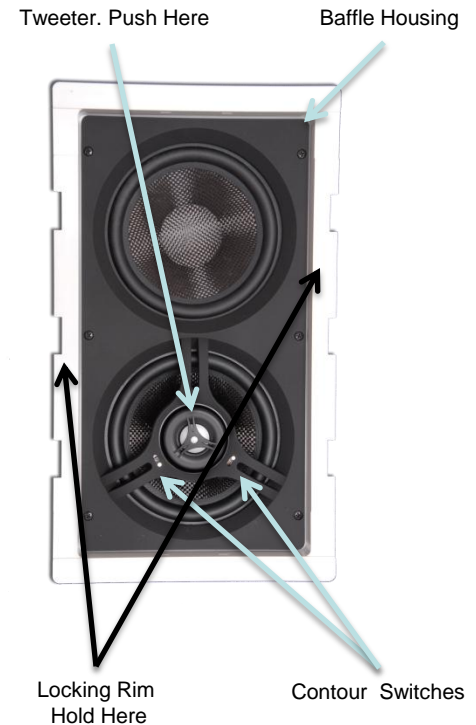
4 Install FastLoc™ Speaker

- Hold the speaker by the Locking Rim as shown. Do Not put fingers into the tweeter material in the center of the speaker.
WARNING! Denting or deforming the tweeter dome will change the acoustics of the speaker.
- Insert the connected speaker into the cut-out hole so the tweeter bridge is about 45" off the floor for Left or Right. Mount the Center speaker above or below the TV, and as close to the sitting ear level as possible. With a #2 Phillips screwdriver, tighten the six(6) Dog-leg screws (clockwise) until the Dog-legs open and clamp the speaker to the drywall. **WARNING: If using a power drill or electric screw gun use the lowest torque setting.** Over tightening may cause improper fit of the grille, damage to drywall and or damage to speaker.
- Adjust the Tweeter position to your ear area at the "Sweet Spot" by slightly pushing on the outer edge of the tweeter with your thumb.
- **Make the crossover Contour Switch adjustments before installing grille.** The Bass and Treble switches on the Tweeter Bridge (as shown in section 4) allows for contour adjustment. Moving the switch to (+) increases the Bass or Treble 3db and to (-) reduces it by 3db. In the (0) setting you achieve a flat frequency response.

NOTE: If you have blown-in insulation and/or a potential rodent problem I suggest you install the SpeKap. It is a breathable membrane that will keep rodent droppings, debris, and insulation from entering the back of the speaker that could change the performance of the speaker. See figure below .



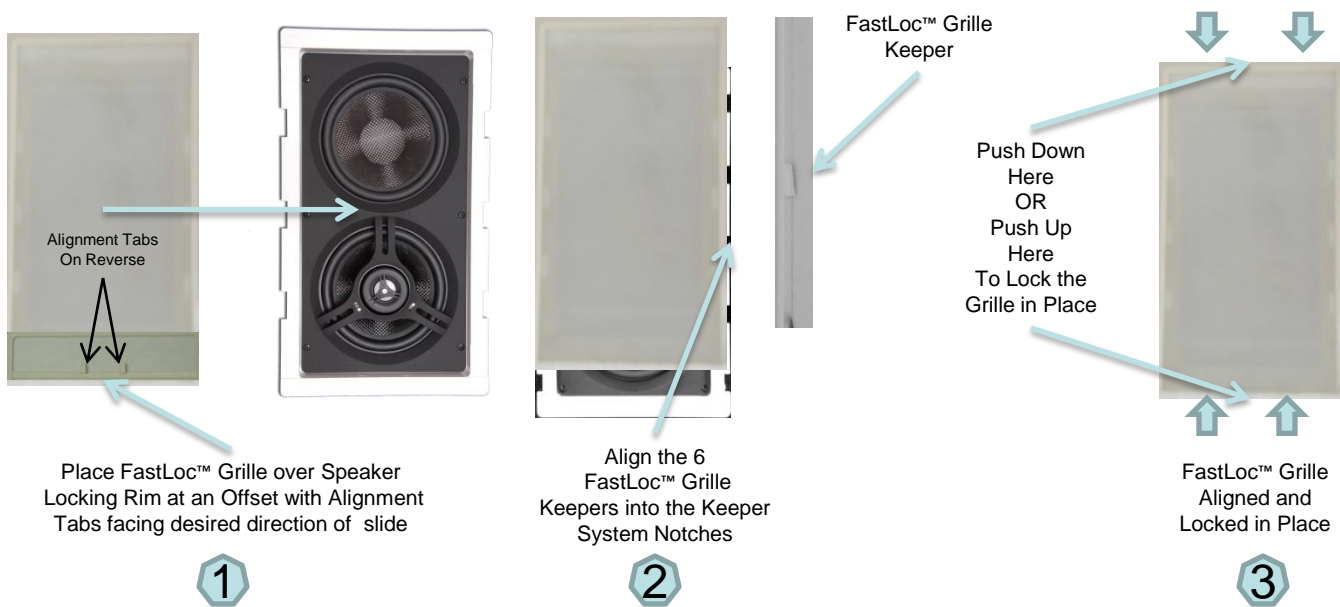
SpeKap
Breathable Membrane
Keeps Debris, Rodent Droppings
and Insulation out of the Speaker



5 Install the FastLoc™ Grille

After Connecting Wires, Inserting Speaker, Cinching Down the Dog Legs and Aiming the Tweeter to the Sweet Spot; Insert the Grille into the Keeper System and Push it Flush to the Locking Rim. Do not push directly in the center of the grille. "Oil Canning" will occur. Using only your fingers, Gently push the grille down on the sides flush to the Locking Rim.

On the FastLoc™ (FL) Grille align the grille into the Keeper System notches with the two tabs pointing in the direction you want to slide the FastLoc™ grille. Then with a slight downward/upward pressure slide the grille up or down on the Vertical plane until there is a tight snug fit against the wall. You should feel and hear a clicks as the grille Keepers cinches on the locking mechanism Notches. Slide grille completely to the end to lock in place and to prevent any vibrations. The FastLoc grille will conform to uneven surfaces.



Limited 5 Year Warranty

Current Audio, LLC speakers and accessories are warranted to be free from defects in materials and or workmanship to the original retail purchaser for a period of 5 years provided the equipment was purchased and installed from a Current Audio, LLC Authorized Dealer.

In the event of defective materials and or workmanship, Current Audio, LLC will, without charge, repair or replace, at its option, the defective product. In order to make claim under this Warranty and to obtain performance of any obligation under warranty, please contact Current Audio. Instructions will be given on how to return the defective product to Current Audio. Returned products must be shipped prepaid. Proof of purchase must be provided with the product.

The Warranty does not apply to damage not resulting from defective materials and or workmanship while in the possession of the original consumer or due to unreasonable use by the original consumer, which includes but not limited to improper installation, negligence, unauthorized repair or modification, aesthetic deterioration from the environment. Products purchased by unauthorized sources will void the warranty and not be honored.

Current Audio, LLC is not liable for any incidental or consequential damages, so the above limitations or inclusion may not apply to you. This warranty gives you specific legal rights, and you may have other rights, which vary from state to state within the United States.