

CS650FL

6.5" 2-Way, In-Ceiling, Coaxial, Infinite Baffle Loudspeaker

The easy to install CS650FL is a full-range ceiling loudspeaker that incorporates the MetaPlex™ woofer with a butyl rubber surround and diffraction-less silk dome Ferrofluid cooled tweeter. This patent pending pivoting tweeter allows for deeper penetration into the room and concentrated sound to the sweet spot. This revolutionary combination provides superior and more natural sound for both foreground and background applications. The Infinite Baffle design makes it the ideal choice for typical applications in open beam attic or enclosed ceilings

The FastLoc™ grille patent no. 8,422,722, is a feature found only at Current Audio. Our design has allowed for the smallest exposed plastic bezel in the industry, truly making it disappear into the mounting surface. The FastLoc grille's unique patent pending mechanism allows for a quick installation and removal of the grille while securely fastening it in place to all types of mounting surfaces. Due to the unique design the grille will conform to uneven surfaces including popcorn, heavy textured and uneven ceilings. While our competitors have chosen to utilize magnets in their designs thus requiring the use of a steel grille that will rust our design allows us to use corrosion and rust resistant aluminum.

This revolutionary combination provides superior and more natural sound for both foreground and background applications.

For efficiency and consistency the CS650FL is timbre matched to the FIT650FL and WS650FL series of speakers.

The speaker color is white, and is a close match to Frazee White Shadow 181. It can be painted to match any decor. The speaker enclosure is a durable UV-resistant material that allows for both indoor and outdoor installations. The speaker is weather-resistant.

The perforated powder-coated aluminum alloy grille is long lasting, corrosion resistant and rust-free.

Four built-in expanding transverse dog leg clamps permit installation with or without pre-wire construction brackets in drywall or material with thickness of 7/32" to 1 3/16".

Electrical connection, up to 12-gauge wire, is made by four gold plated constant tension spring-loaded terminals.

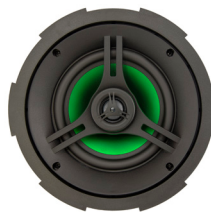
With our limited 5 year warranty you are assured years of superior trouble free operation.

Part Number	92400
Manual URL	www.currentaudio.com
Accessories	TB6 Tile Support Bridge Part# 92083 R70VT Transformer, 8ohm, 70V, Part# 92070 Volume Control ZL75R Part# 92034 SpeKap Part # 92069



SPECIFICATIONS

Driver	6.5" MetaPlex™ Composite Cone with Butyl Rubber Surround
Tweeter	Patent Pending Pivoting, Diffraction-less 1" (25mm) Silk Ferrofluid Cooled Dome
Crossover	Gold press terminals
Grill specification	Perforated Aluminum with Scrim Cloth
Frequency Response	42Hz-20kHz
Impedance (nominal)	8 Ohms. Fixed Crossovers
Power Handling	5 - 100 Watts
SPL	90 dB 1W/1m
Diameter x Depth	9 3/8" (237mm) x 3 7/8" (98mm)
Retrofit Cutout Diameter	8 1/4" (210mm)
Grille Diameter	9 3/4" (247mm)
Standard Pair Pack Dimensions (weight)	14 1/2 x 14 3/4 x 12 3/4 (13 lbs)
Master Pack Dimensions 2 pair (weight)	30 x 15 1/4 x 13 1/2 (27 lbs)



CURRENTAUDIO®

©2017 Current Audio • 1890 Cordell Court, Suite 105 El Cajon, CA 92020 • Sales 866-927-7181
All product specifications are subject to change without notice.

Rev. SS-CS650FL 02/15