

FIT652FL

8" 2-Way, In-Ceiling, Coaxial, Infinite Baffle Loudspeaker

The easy to install FIT652FL is a full-range ceiling loudspeaker with Focused Image Technology™. It incorporates a lightweight Aluminum Alloy woofer with a butyl rubber surround and the diffraction-less aluminum dome pivoting Ferrofluid cooled tweeter. This Patent Pending pivoting tweeter allows for deeper penetration into the room and a concentrated sound to the sweet spot. This revolutionary combination provides superior and more natural sound for both foreground and background applications.

The FastLoc grill patent no. 8,422,722, is a feature found only at Current Audio. Our design has allowed for the smallest exposed plastic bezel in the industry, truly making it disappear into the mounting surface. The FastLoc grill's unique patent pending mechanism allows for a quick installation and removal of the grill while securely fastening it in place to all types of mounting surfaces. Due to the unique design the grill will conform to uneven surfaces including popcorn, heavy textured and uneven ceilings. While our competitors have chosen to utilize magnets in their designs thus requiring the use of a steel grill that will rust our design allows us to use corrosion and rust resistant aluminum.

The FIT series speakers additionally incorporate the unique Patent Pending Three Dimensional Positioning (3-DP) woofer. This design allows the user to separately adjust the angle, tilt and rotation of the woofer so you can direct the sound where you want it, not where you install it.

The Positive Position Lock system (PPL) uses two screws on either side of the woofer that pull the back plane tight and locks the position in place.

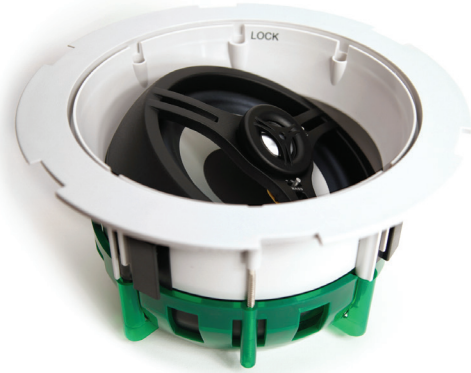
The Infinite Baffle design makes it the ideal choice for typical applications in open beam attic or enclosed ceilings.

The speaker color is white, and is a close match to Frazee White Shadow 181. It can be painted to match any décor. The speaker enclosure is a durable UV resistant material that allows for both indoor and outdoor installations. The perforated powder-coated aluminum alloy grill is long lasting, corrosion resistant and rust-free.

Four built-in expanding transverse dogleg clamps permit installation with or without pre-wire construction brackets in drywall or material with thickness of 5/16" to 1 5/16".

Electrical connection, up to 12 gauge wire, is made by gold plated constant tension spring-loaded terminals.

With our limited 5 year warranty you are assured years of superior trouble free operation.



SPECIFICATIONS

Driver	6.5" Aluminum Cone with Butyl Rubber Surround
Tweeter	Patent Pending Pivoting, Diffraction-less 1" (25mm) Aluminum Ferrofluid Cooled Dome
Crossover	3 position EQ switches for Driver and Tweeter adjustments, gold press terminals
Grill specification	Perforated Aluminum with Scrim Cloth
Frequency Response	38Hz - 20kHz
Impedance (nominal)	8, 6 or 4 ohms dependent upon driver EQ switch setting
Power Handling	5 - 125 Watts
SPL	91 dB 1W/1m
Diameter x Depth	9 7/8" (250mm) x 5 5/8" (144mm)
Retrofit Cutout Diameter	8 3/8" (213mm)
Grille Diameter	10 7/8 (276mm)
Standard Pair Pack Dimensions (weight)	14 7/8 x 11 1/4 x 11 5/8 (10 lbs)
Master Pack Dimensions 2 pair (weight)	23 1/8 x 15 3/16 x 12 1/8 (23 lbs)

Part Number	92007
Manual URL	www.currentaudio.com
Accessories	TB6 Tile Support Bridge Part# 92083 R70VT Transformer, 8ohm, 70V, Part# 92070 Volume Control ZL45R Part# 92034 SpeKap Part # 92069

